

SHARP understands that today's busy office environment requires the best possible equipment to help it run smoothly and efficiently/**This is Why** our A3 black & white MFPs have been designed to provide truly exceptional performance under the most demanding of conditions.

MX-M502N / MX-M452N MX-M362N / MX-M282N Multi-Function Systems





**Large, Clear
7.0 inch Colour
Touch Screen**



**Engineered to
the Highest
Standards**

/This is Why choosing a Sharp **A3 MFP will help boost your productivity and efficiency**

Power and productivity that every office needs

Equipped with many of the advanced performance features that have made Sharp's colour MFPs so successful, our new black & white MFPs are perfect for all busy offices and any medium to large workgroup.

Combining fast colour network scanning capabilities with powerful print, copy and fax features, the MX-M502N, MX-M452N, MX-M362N and MX-M282N have all the functionality and speed you need to put them at the heart of your office operations. They're easy to use, too.

There's a 7.0 inch colour touch screen LCD display with thumbnail views that makes even the most advanced features instantly and intuitively accessible. The panel can even be configured to give different users their own home screens with customised keys.

More for your money

IT Administrators will appreciate the Remote Access Interface which simplifies support by letting them view and operate each machine's front panel display from across the network, and everyone will love the contemporary design that makes these new MFPs a perfect choice for any modern office.

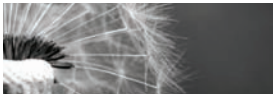
They can also be supplied with Sharp OSA® (Open Systems Architecture), which gives you access to a wide range of third party software solutions that can automate many manual office tasks, such as the storing and management of documents, or the processing of forms.

Designed with the environment in mind

As well as being equipped with a manual power save button, to save energy and reduce running costs, the Energy Star certified MX-M502N, MX-M452N, MX-M362N and MX-M282N benefit from an industry-leading design that cuts night energy consumption right down to a single watt – just enough to receive faxes.

Just as much care has been taken with the manufacturing processes and materials making these MFPs environmentally advanced as well as user friendly.





600 x 600 dpi
Print Resolution



Powerful
Scanning
Capabilities

MX-M502N / MX-M452N MX-M362N / MX-M282N Key Features

Highly productive operation

- Speedy output of max. 50/45/36/28 ppm and fast first copy time of 3.9/3.9/4.6/ 4.6 sec
- Finishing options include bi-folding saddle stitch finisher and inner finisher
- Built-in stackless duplex module and optional 100-sheet Reversing Single Pass Feeder
- 50 opm scan speed for one-sided originals and 20 opm for two-sided originals (in colour and B/W)
- Standard hard disk and electronic sorting
- Standard 1100-sheet paper capacity, expandable to max. 5600 sheets
- Network tandem function doubles output speed by linking two MFPs
- Job Build function for large-volume documents

All-in-one performance

- Supports Gigabit Ethernet and the latest network protocols and operating systems
- Standard PCL6 and optional PS3 emulation
- Full-colour network scanning with scan to e-mail/FTP server/desktop/network folder/USB, and support for JPEG, TIFF, XPS, PDF, and high-compression PDF*¹ formats
- USB port at the front of the MFP allows easy scan to/print from USB memory
- Sharpdesk for integrated, intuitive document management on a PC
- Document Filing function to instantly reuse job data stored on the HDD
- Optional Super G3 fax and Internet fax that supports direct SMTP
- LDAP support for easy browsing of e-mail addresses and fax numbers
- Supports the XPS format (standard for scanning; optional for printing)

Environmentally advanced design

- Certified for Energy Star
- Energy-saving design (less than 1 W in standby for fax reception)

Superb image quality

- High resolution, 600 x 600 dpi imaging with 256-level greyscale; clearly reproduces fine lines, small text, and delicate halftones
- Seven exposure modes including Auto and Text/Photo provide optimum copy quality



Multi-layered security solutions

- Optional Data Security Kit encrypts and erases data retained inside the MFP
- Supports the IEEE 802.1X standard for port-based network access control
- Function-specific user authentication
- External Active Directory server allows user authentication management of multiple MFPs and of a greater number of users
- IP/MAC address filtering restricts unauthorised access
- SSL and IPsec enable data encryption for secure network communications
- Encrypted PDF with password protection for secure scanning
- Document Control function*² prevents unauthorised copying, scanning, faxing, and filing of confidential documents)

Sharp's one-of-a-kind features

- Sharp OSA (Open Systems Architecture)*³ allows integration with network applications and makes them accessible from the LCD control panel
- 7-inch, touch-screen colour LCD provides thumbnails/previews of Document Filing and fax reception data and previews of copy/send/save jobs
- Choice of six LCD screen colours
- Control panel can be remotely displayed and operated on a PC*⁴

*¹ Requires optional MX-EBX3.

*² Requires optional Data Security Kit.

*³ Requires optional MX-AMX2 and/or MX-AMX3.

*⁴ Requires VNC application.



**Ideal for Today's
Busy Office
Environment**



**Powerful
Finishing
Capabilities**

/This is Why our finishing options help streamline your workload and enhance your documents

With four print speeds to choose from, 28 pages per minute (ppm), 36 ppm, 45 ppm or an impressive 50 ppm, you can match the performance to meet the needs of your particular team. And that's just the start.

These rapid print speeds are enhanced by a range of advanced features and options that will help you raise productivity to unprecedented levels.

A generous 80 GB hard drive and powerful processor make light work of even the most complex jobs and you can expand the standard 1100-sheet paper capacity right the way up to 5600 sheets for longer uninterrupted printing. And when times get busy, you can even split jobs between two MFPs for twice the speed and capacity.

Sophisticated finishing options

Now you can add authority to your documents with a range of options that will sort, fold and staple the pages just as you need them. Choices include a space-saving internal finisher for simple sorting, stapling and off-set stacking, and a hole puncher.

You can also specify a bi-folding saddle stitch finisher for folding and stapling multi-page documents into booklets, and you can add a high-capacity 4000-sheet finisher that's perfect for document-intensive environments.

Special applications

Other useful features give you the convenience of printing directly from USB memory sticks, the ability to print 'proof sets' before committing to long print runs, and other time-saving capabilities such as direct printing from web pages, email attachments and FTP servers.

At a glance

- **Choice of four models** with fast print speeds: **28, 36, 45 or 50 ppm**.
- **600 x 600 dpi print resolution**.
- **Stackless Reversing module** saves you filing space and money.
- **Network printing supports Gigabit Ethernet** and the most commonly used network operating systems and protocols.
- **USB memory direct printing** – conveniently print data directly from most USB memory devices, without the need for a PC.
- **XPS/PDF/TIFF/JPEG direct print***1 – save time by printing XPS, PDF, TIFF or JPEG files without using the printer driver, either by calling and printing the file directly from an FTP server, direct printing from a Web page, or direct printing of e-mail attachments.
- **Standard PCL6** and optional PS3 emulation*2.
- **Network tandem function** – double the effective output speed by sharing jobs between two MFPs on the same network.
- **Proof printing** – check a trial set before printing out a multi-page document in large numbers.
- **Barcode font** print compatibility*3.

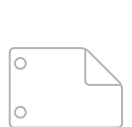
Finishing options



Stapling



Hole Punching



**Saddle
Stitching**



Bi-folding

(10Base-T/100Base-TX/1000Base-T)

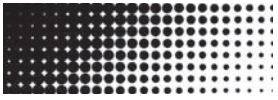


- **Windows NT® 4.0, Windows Server™ 2003/2008, 98/Me/2000/XP/Vista/7**
- **Macintosh, Novell, UNIX, AS400**

*1 Requires optional MX-PKX1 for PDF direct printing and MX-PUX1 & L80MXSMX3 for XPS. May not support all formats.

*2 Requires optional MX-PKX1.

*3 Requires optional AR-PF1.



Superb
Halftone
Reproduction



600 x 600 dpi
Copy Resolution

/This is Why our MFPs produce effortless, high quality copies, time after time

Everything about these latest MFPs has been optimised for speed, efficiency and ease of use. Not only do they copy just as quickly as they print but they have a first-copy-out time of only 3.9 seconds*¹ or 4.6 seconds*¹ depending on the model.

The quality is exactly what you've come to expect from Sharp. The 600 x 600 dpi resolution is supported by a 256-level greyscale for reproducing fine lines and delicate halftones; digital auto exposure control delivers optimum copy contrast, and selectable text and photo modes ensure accurate copies every time.

They help everyone stay productive, too, with a whole range of advanced copy functions that deliver exceptional versatility. Book Copy, for example, is great for compiling copies of a book (or other bound original) directly into pamphlet format. The Card Shot feature lets you copy both sides of a card, such as an ID card or licence, on to one page in a one-touch operation, and the Tab Copy/Print function makes it easy to copy or print directly on to the tabs on document separators.

At a glance

- **Fast first copy time***¹ of just 3.9 seconds (4.6 seconds with MX-M362N & MX-M282N).
- **Optional high-speed 100-sheet A3 Reversing Single Pass Feeder***² (RSPF) for quick and easy double-sided copying.
- **Mixed Size Original Copy mode** automatically recognises documents of different sizes and chooses the appropriate paper.
- **Electronic sorting and offset stacking** with space-saving inner finisher to keep jobs separate.
- **Job Build function** for easier management of large, multi-page jobs even if they exceed the capacity of the RSPF*².
- **Image editing functions**, including multi-shot, multi-page enlargement, image repeat and mirror image for extra versatility.
- **Proof copy function** lets you produce a test set of documents before committing to a long run.
- **Cover/transparency insertion** for the effortless creation of professional-looking documents.

*¹ Best achieved time based on A4 copy, long edge feeding from 1st paper drawer, using document glass, when machine is ready. May vary depending on machine conditions and operating environment.

*² Requires optional MX-RP11.



Full colour scanning



Scan to Email, FTP, Network, PC and USB

/This is Why our colour scanners are faster and more flexible

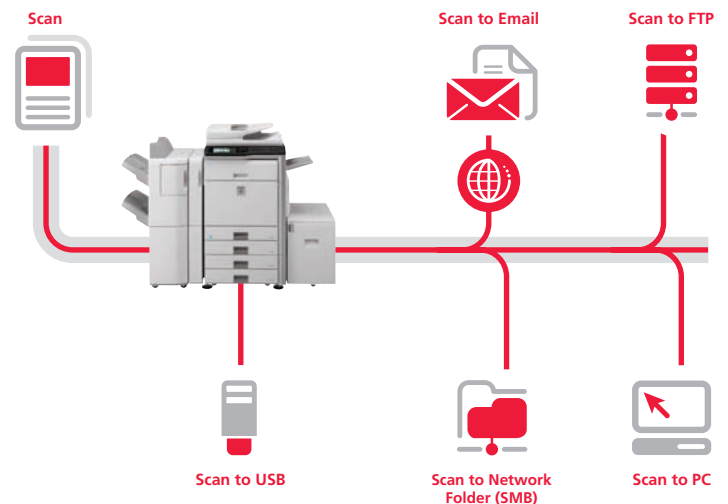
Each of the new MX-M502N, MX-M452N, MX-M362N and MX-M282N MFPs can race through large scanning jobs, handling up to 50 originals per minute whether they are black and white or colour, and single- or double-sided.

Multiple scan destinations including email recipients, network folders, FTP servers, your desktop, or a USB memory stick can be selected via the control panel. You can also scan documents directly to a choice of formats including XPS, JPEG, TIFF and PDF, as well as the High-Compression PDF format* for smaller files, faster transfers and lower network overheads.

At a glance

- **Full-colour scanning** to your PC, e-mail recipients, FTP servers, network folders, or a memory stick that plugs into an easily accessible USB port.
- **Scan to Me function** automatically sends scanned documents to the e-mail address of the authorised user currently logged in.
- **Up to 50 originals per minute** scan speed.
- **Mixed-size original scanning** automatically accommodates documents of different sizes.
- **Compatible with TWAIN-compliant** network applications.
- **Includes Sharpdesk** document management software.
- **Lightweight Directory Access Protocol (LDAP)** allows easy browsing of e-mail addresses for rapid distribution of scanned documents, as well as automatic synchronisation with your primary e-mail server.
- **Scan directly** to XPS, TIFF, JPEG, PDF, encrypted PDF and High-Compression PDF*.

* Requires optional MX-EBX3.





**Automated
Finishing**

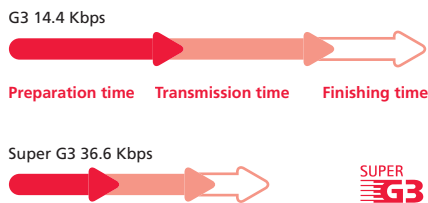


**Paperless
Faxing**

/This is Why our fax function is so versatile

You can extend the functionality of the new MFPs even further by specifying the optional fax expansion kit. Documents can either be scanned and sent over ultra-fast 33,600 bps Super G3 fax, or you can simply send digital files directly from your PC with the PC-Fax/PC-Internet Fax* function.

When faxes arrive, they can be automatically routed to a mailbox without being printed and you can view preview images to help you decide which ones you need a hard copy of.



At a glance

- **Send or receive** single or double-sided faxes up to A3 in size.
- **Super G3/JBIG compression** for extra speed and online transmission for faster operation.
- **Transmits faxes** in less than three seconds.
- **One-touch dialling** of up to 1000 stored numbers.
- **Can broadcast faxes** to as many as 500 destinations.
- **Paperless faxing** with inbound routing and thumbnail previews lets you decide which faxes to print.
- **Flash memory** prevents data loss in a power failure.
- **Duplex faxing** lets you scan and send two-sided documents and print incoming faxes onto both sides of paper.
- **Internet Fax* with Direct SMTP support** means that outgoing internet faxes do not go via the mail server, making transmission faster and cheaper.
- **PC-Fax*/PC-Internet Fax*** lets you send directly from a PC to a fax machine without printing to paper.
- **Fax Destination Confirmation** prevent transmission errors by letting you reconfirm fax numbers before sending.

* PC-Fax requires optional MX-FXX2 and PC-Internet Fax requires optional MX-FWX1.

Automated fax finishing

A built-in duplex module saves resources by automatically printing inbound faxes on both sides of the page; you can set the machine to automatically make copies for distribution, and if you have the optional finisher installed it will even staple multi-page faxes to keep them organised.



Clear, Intuitive
Thumbnail
Preview



/This is Why our management system prevents small problems becoming bigger ones

Your new Sharp MFP comes complete with everything you need to manage your document workflow. An 80 GB integrated hard drive gives you plenty of space to save scanned files for future retrieval and you can even store and repeat entire print runs without recreating the job.

Up to 3000 files or 20,000 pages*¹ of copy, print, scan, and fax*² data can be filed in up to 1000 shared, long-term storage in folders, and up to 1000 files or 10,000 pages*¹ placed in temporary storage for repeating jobs without having to recreate them. To access them, simply browse the thumbnail previews on the LCD panel, make a selection and enter your PIN.

Easy document management with Sharpdesk

Sharpdesk document management software is a desktop-based solution that's capable of handling more than 200 different file formats. It lets you browse, sort, search and share files as well being able to create documents that combine scanned and operator-created data.

- Intuitive desktop display features **thumbnail viewing**.
- Sharpdesk Imaging provides **annotation tools** for paper-free proofreading.
- Sharpdesk **Composer** combines different types of files into a single document.
- **Optical character recognition** converts documents into editable text files.
- **Output zone** distributes files to e-mail, printers and other applications.
- **File search** allows searching by file name, keyword or thumbnail.

Sharp OSA® (Open Systems Architecture)

You can enhance the productivity of the MX-M502N, MX-M452N, MX-M362N and MX-M282N further still, thanks to Sharp OSA (Open Systems Architecture) which lets 3rd party developers directly integrate the MFP with your business applications. There are three optional Sharp OSA modules:

- **Application Integration Module (MX-AMX1)** – lets users add data to scanned documents before sending them directly to applications for processing and archiving
- **Application Communication Module (MX-AMX2)** – lets remote applications create, configure, and execute scanning and printing jobs on the MFP
- **External Account Module (MX-AMX3)** – tracks usage by individuals and workgroups and restricts usage according to individual access rights

*¹ Measured using Sharp's standard chart (A4 with 6% coverage, B/W). The Quick File Folder shares the HDD with the Job Build function; up to 12 GB of data storage is available when using both functions. The storage capacity will be less for colour pages.

*² For fax and Internet fax jobs, only transmitted data (not received faxes) can be saved in the Document Filing function.





/This is Why our range of advanced MFPs are easy to configure, support and run

Like all Sharp MFPs, the MX-M502N, MX-M452N, MX-M362N and MX-M282N are easy to configure and support, and multiple devices can be managed from a single remote location. The result is minimum time and effort for maximum work efficiency.

Web-based system settings

Administrators can configure important system settings such as address book control, document filing management, and operator access control from across the network as well as from the front control panel.

Access control

You can keep control of running costs by restricting who can use the MFP and for what purpose, giving permission to carry out long print or copy runs to specific individuals only, for example.

Access and usage rights can be set up for different workgroups and departments, with further control achieved through the configuration of up to 1000 password-protected user accounts with customised settings.

Remote diagnosis

The MX-M502N, MX-M452N, MX-M362N and MX-M282N can be monitored remotely through a web browser and conditions such as 'Low Toner' will appear on the MFP's web page. In addition, features such as E-Mail Status and Alert will automatically create and send email alerts when corrective action or maintenance is required.

Network utility software

- **Sharp's Printer Administration Utility (PAU)**, supplied as standard, makes the configuration of printers and MFPs quicker and easier than ever before. With PAU, you can monitor any SNMP-compliant printer on the network, without ever leaving your desk and enjoy complete, real-time control of your printer fleet through any standard web browser. Error-reporting, technical support, driver installation, printer configuration: everything is easier and more accessible.
- Another network utility, **Sharp Printer Status Monitor**, lets people check the MFP's operating status, toner levels, paper supplies and features before they start a job, as well as displaying an icon on the desktop when the work has been completed and the documents are ready for collection.
- **Device cloning for rapid deployment** – It is quick and easy to deploy Sharp MFPs. Simply set up the first one, copy its settings and then transfer the entire configuration to each additional machine via a web browser. For extra convenience, you can edit the settings before transferring them.
- **Remote operation for easier support** – The remote access interface saves time and effort while minimising downtime by letting your support staff view and operate the MFPs control panel without leaving their desks. The support technician simply opens a web browser and either fixes the problem directly or gives step-by-step training to the operator to achieve the same result.



/This is Why our MFPs include industry leading multi-layer security

The MX-M502N, MX-M452N, MX-M362N and MX-M282N safeguard sensitive data with powerful encryption technology and advanced security functions that provide multiple levels of network and data security.

Data Security Kit

Digital copiers, printers and MFPs can retain hundreds of pages of confidential information from previous jobs on their hard disks or internal memory. To protect this information from unauthorised access, the optional Data Security Kit automatically encrypts the data or securely erases it on completion of the job. It also encrypts the address book.

Document Control Function

Document Control*¹ prevents the unauthorised copying, scanning, faxing and filing of confidential documents by adding copy-prevention data to a document when it is first copied or printed. If someone subsequently tries to make a copy of the document, the MFP detects this data and cancels the job or outputs a blank page*².

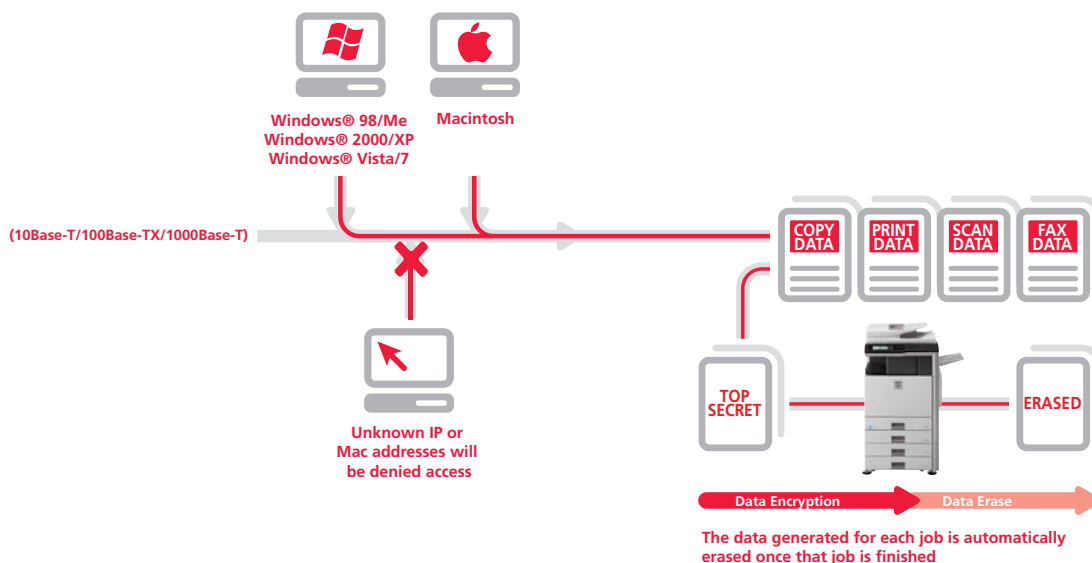
At a glance

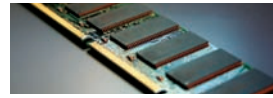
- **Data Security Kit***¹ encrypts data on the hard disk and internal memory, removing it safely and completely after use.
- **Secure Network Card** provides network port and protocol management to prevent direct connection and access by unauthorised users.
- **Secure Sockets Layer (SSL)** and IPsec encrypts data communications to prevent data leakage through the network.
- **Encrypted PDF** with password protection prevents unauthorised viewing of confidential image data.
- **Document Control***¹ prevents unauthorised copying, scanning, faxing and filing.
- **Supports IEEE 802.1X standard** for port based network control.
- **User authentication** requires logging into the machine with passwords for machine access.
- **Confidential data storage** and printing protects sensitive information by requiring the user to enter a PIN code before the documents are produced.
- **Secure data storage for Document Filing***¹ – all data that goes through the hard disk is encrypted, while passwords used in the Advanced Filing function ensure solid security*³.

*¹ Requires optional Data Security Kit. Document Control Function may not work for certain types of documents and paper.

*² May also output a blank page if paper has already been fed for the job before the MFP detects the copy prevention data.

*³ Password Protection is provided as standard. Encryption is optional.





Printer Finishing options

Finishing

- 1. MX-FNX9 Finisher**
 - A3 to B5 (offset/staple), A3W to A5R (non offset)
 - Offset tray (upper): max. 500-sheet paper capacity*¹
 - Stapling capacity: max. 50-sheet multi-position staple*¹
 - Staple position: 3 locations (front, rear or 2 point stitching)*¹**MX-PNX1A/C & D** 2/4 Hole & 4 Hole-Wide Punch Module
 - Optional Punch Module for MX-FNX9
- 2. MX-FN10 Saddle** 1000-Sheet Saddle Stitch Finisher
 - A3 to B5 (offset/staple), A3W to A5R (non offset)
 - Offset tray (upper): max. 1000-sheet paper capacity*¹
 - Stapling capacity: max. 50-sheet multi-position staple*¹
 - Staple position: 3 locations (front, rear or 2 point stitching)*¹
 - Saddle stitch tray (lower): 10 sets (11-15 sheets), 15 sets (6-10 sheets), 20 sets (1-5 sheets). 15 sheets max per set.**MX-PNX5A/C & D** 2/4 Hole & 4 Hole-Wide Punch Module
 - Optional Punch Module for MX-FN10
- 3. MX-FN11** 4000-Sheet High Capacity Finisher
 - A3 to B5 (offset/staple), A3W to A5R (non staple/offset)
 - Upper tray max. 1550 sheets capacity*¹
 - Lower tray max. 2450 sheets capacity*¹
 - Stapling capacity: max. 50-sheet multi position staple*¹
 - Staple position: 3 locations (front, rear or 2 point stitching)*¹
- 4. MX-PNX6A/C & D** 2/4 Hole & 4 Hole-Wide Punch Module
 - Optional Punch Module for MX-FN11
- 5. MX-RBX3** Paper Pass Unit
 - Required when using MX-FN10 or MX-FN11
- 6. MX-TU11** Exit Tray Cabinet Unit
- 7. MX-TRX2** Exit Tray Unit

Base unit

- 8. MX-DEX9** Stand with 2 x 500 Sheet Paper Drawers
 - A3 to B5R, 500 sheets each (80 gsm) for lower and upper trays
- 9. MX-DEX8** Stand with 500 Sheet Paper Drawer
 - A3 to B5R, 500 sheets (80 gsm)
- 10. MX-DK131** Cabinet
- 11. MX-LCX1** 3500-Sheet Large Capacity Tray
 - A4 or B5, 3500 sheets (80 gsm)
- 12. MX-VRX1** Document Cover
- 13. MX-RP11** Reversing Single Pass Feeder
 - A3 to B5, 100 sheets (80 gsm), 3 -128 gsm (simplex), 50-105 gsm (duplex)

Connectivity board

L80MXSMX3 1 GB Expansion Memory Board

Printing

- MX-PKX1** PS3 Postscript Printing Expansion Kit
- MX-PUX1** XPS Expansion Kit*²
- AR-PF1** Barcode Font Kit

Faxing

- 14. MX-FXX2** Super G3 Fax Module Expansion Kit
- MX-FWX1** Internet Fax Expansion Kit

Scanning

- AR-SU1** Stamp Unit
 - Marks already scanned documents for checking
- MX-EBX3** Enhanced Compression Kit

Security

- MX-FR24** Data Security Kit
 - Common Criteria certified
- MX-FR24U** Data Security Kit
 - Commercial version

Sharpdesk™ licenses

- MX-USX1** 1-User Kit
- MX-USX5** 5-User Kit
- MX-US10** 10-User Kit
- MX-US50** 50-User Kit
- MX-USA0** 100-User Kit

Sharp OSA®

- MX-AMX1** Application Integration Module
- MX-AMX2** Application Communication Module
- MX-AMX3** External Account Module

*¹ A4 or smaller, 80 gsm.

*² Requires L80MXSMX3.

Note: Some options may not be available in some areas.



Specifications

MX-M502N / MX-M452N
MX-M362N / MX-M282N
Digital Multifunctional System



General													
Engine speed (ppm/cpm)	<table border="0"> <tr> <td>MX-M502N:</td> <td>A4 B/W: 50</td> <td>A3 B/W: 22</td> </tr> <tr> <td>MX-M452N:</td> <td>A4 B/W: 45</td> <td>A3 B/W: 20</td> </tr> <tr> <td>MX-M362N:</td> <td>A4 B/W: 36</td> <td>A3 B/W: 17</td> </tr> <tr> <td>MX-M282N:</td> <td>A4 B/W: 28</td> <td>A4 B/W: 15</td> </tr> </table>	MX-M502N:	A4 B/W: 50	A3 B/W: 22	MX-M452N:	A4 B/W: 45	A3 B/W: 20	MX-M362N:	A4 B/W: 36	A3 B/W: 17	MX-M282N:	A4 B/W: 28	A4 B/W: 15
MX-M502N:	A4 B/W: 50	A3 B/W: 22											
MX-M452N:	A4 B/W: 45	A3 B/W: 20											
MX-M362N:	A4 B/W: 36	A3 B/W: 17											
MX-M282N:	A4 B/W: 28	A4 B/W: 15											
Paper size	Max/min: A3W (via bypass) /A5R												
Paper weight	<table border="0"> <tr> <td>Drawer:</td> <td>60-209 gsm</td> </tr> <tr> <td>Large-capacity tray:</td> <td>60-105 gsm</td> </tr> <tr> <td>Multi-bypass tray:</td> <td>56-209 gsm</td> </tr> </table>	Drawer:	60-209 gsm	Large-capacity tray:	60-105 gsm	Multi-bypass tray:	56-209 gsm						
Drawer:	60-209 gsm												
Large-capacity tray:	60-105 gsm												
Multi-bypass tray:	56-209 gsm												
Paper capacity	<table border="0"> <tr> <td>Std:</td> <td>1100 sheets (2 x 500-sheet drawers and 100-sheet multi-bypass tray)</td> </tr> <tr> <td>Max:</td> <td>5600 sheets (4 x 500-sheet drawers, 3500-sheet large capacity tray and 100-sheet multi-bypass tray)</td> </tr> </table>	Std:	1100 sheets (2 x 500-sheet drawers and 100-sheet multi-bypass tray)	Max:	5600 sheets (4 x 500-sheet drawers, 3500-sheet large capacity tray and 100-sheet multi-bypass tray)								
Std:	1100 sheets (2 x 500-sheet drawers and 100-sheet multi-bypass tray)												
Max:	5600 sheets (4 x 500-sheet drawers, 3500-sheet large capacity tray and 100-sheet multi-bypass tray)												
Warm-up time*1	Less than 20 sec.												
Memory	<table border="0"> <tr> <td>Std:</td> <td>576 MB (copier), 1 GB (printer)</td> </tr> <tr> <td>Max:</td> <td>2 GB (printer)</td> </tr> <tr> <td>Option:</td> <td>1 GB (printer)</td> </tr> </table>	Std:	576 MB (copier), 1 GB (printer)	Max:	2 GB (printer)	Option:	1 GB (printer)						
Std:	576 MB (copier), 1 GB (printer)												
Max:	2 GB (printer)												
Option:	1 GB (printer)												
HDD capacity*2	80 GB												
Power requirements	Rated local AC voltage \pm 10%, 50 / 60 Hz												
Power consumption	Max: 1.84 kW (200 to 240 V)												
Dimensions (wdh)	<table border="0"> <tr> <td>With Document Cover:</td> <td>645 x 695 x 833 mm</td> </tr> <tr> <td>With RSPF:</td> <td>645 x 695 x 953 mm</td> </tr> </table>	With Document Cover:	645 x 695 x 833 mm	With RSPF:	645 x 695 x 953 mm								
With Document Cover:	645 x 695 x 833 mm												
With RSPF:	645 x 695 x 953 mm												
Weight	<table border="0"> <tr> <td>With Document Cover:</td> <td>88 kg approx.</td> </tr> <tr> <td>With RSPF:</td> <td>95 kg approx.</td> </tr> </table>	With Document Cover:	88 kg approx.	With RSPF:	95 kg approx.								
With Document Cover:	88 kg approx.												
With RSPF:	95 kg approx.												
Copier													
Original paper size	Max: A3												
First copy time*3	<table border="0"> <tr> <td>MX-M502N:</td> <td>B/W: 3.9 sec.</td> </tr> <tr> <td>MX-M452N:</td> <td>B/W: 3.9 sec.</td> </tr> <tr> <td>MX-M362N:</td> <td>B/W: 4.6 sec.</td> </tr> <tr> <td>MX-M282N:</td> <td>B/W: 4.6 sec.</td> </tr> </table>	MX-M502N:	B/W: 3.9 sec.	MX-M452N:	B/W: 3.9 sec.	MX-M362N:	B/W: 4.6 sec.	MX-M282N:	B/W: 4.6 sec.				
MX-M502N:	B/W: 3.9 sec.												
MX-M452N:	B/W: 3.9 sec.												
MX-M362N:	B/W: 4.6 sec.												
MX-M282N:	B/W: 4.6 sec.												
Continuous copy	Max: 999 copies												
Resolution	600 x 600 dpi												
Gradation	Equivalent to 256 levels												
Zoom range	25 to 400% (25 to 200% using RSPF) in 1% increments												
Preset copy ratios	10 ratios (5R/5E)												
Document Filing Capacity													
Document filing	<table border="0"> <tr> <td>Main and custom folders:</td> <td>38 GB, 20,000 pages*4 or 3000 files</td> </tr> <tr> <td>Quick file folder:</td> <td>12 GB, 10,000 pages*4 or 1000 files</td> </tr> </table>	Main and custom folders:	38 GB, 20,000 pages*4 or 3000 files	Quick file folder:	12 GB, 10,000 pages*4 or 1000 files								
Main and custom folders:	38 GB, 20,000 pages*4 or 3000 files												
Quick file folder:	12 GB, 10,000 pages*4 or 1000 files												
Stored jobs	Copy, print, scan, fax transmission*5												
Storage folders	Quick folder, main folder, custom folder (max. 1000 folders)												
Confidential storage	Password protection												
Colour Network Scanner													
Scan method	<table border="0"> <tr> <td>Push scan:</td> <td>Via operation panel</td> </tr> <tr> <td>Pull scan:</td> <td>TWAIN-compliant application</td> </tr> </table>	Push scan:	Via operation panel	Pull scan:	TWAIN-compliant application								
Push scan:	Via operation panel												
Pull scan:	TWAIN-compliant application												
Resolution	<table border="0"> <tr> <td>Push scan:</td> <td>100, 200, 300, 400, 600 dpi</td> </tr> <tr> <td>Pull scan:</td> <td>75, 100, 150, 200, 300, 400, 600 dpi, 50 to 9600 dpi</td> </tr> </table>	Push scan:	100, 200, 300, 400, 600 dpi	Pull scan:	75, 100, 150, 200, 300, 400, 600 dpi, 50 to 9600 dpi								
Push scan:	100, 200, 300, 400, 600 dpi												
Pull scan:	75, 100, 150, 200, 300, 400, 600 dpi, 50 to 9600 dpi												
File formats	TIFF, PDF, encrypted PDF, JPEG (colour only), XPS*6 and high-compression PDF*7												
Scanner utilities	Sharpdesk (10 licenses)												
Scan destinations	Scan to e-mail, desktop, FTP server, network folder, USB memory, Opt. i-Fax												
Network Printer													
Resolution	600 x 600 dpi												
Interface	USB 2.0 high speed, 10Base-T/100Base-TX/1000Base-T												
Supported OS	<table border="0"> <tr> <td>Standard:</td> <td>Windows 2000, XP, Vista, 7, Server 2003, Server 2008, Server 2008R2</td> </tr> <tr> <td>Optional:</td> <td>Mac OS 9.0-9.2.2, Mac OS X 10.2.8, 10.3.9, 10.4.11, 10.5-10.5.8, 10.6-10.6.2</td> </tr> </table>	Standard:	Windows 2000, XP, Vista, 7, Server 2003, Server 2008, Server 2008R2	Optional:	Mac OS 9.0-9.2.2, Mac OS X 10.2.8, 10.3.9, 10.4.11, 10.5-10.5.8, 10.6-10.6.2								
Standard:	Windows 2000, XP, Vista, 7, Server 2003, Server 2008, Server 2008R2												
Optional:	Mac OS 9.0-9.2.2, Mac OS X 10.2.8, 10.3.9, 10.4.11, 10.5-10.5.8, 10.6-10.6.2												
Network protocols*8	TCP/IP (IPv4, IPv6), IPX/SPX (NetWare), NetBEUI, EtherTalk (AppleTalk)												
Printing protocols	LPR, Raw TCP (port 9100), POP3 (e-mail printing), HTTP, Novell Printserver application with NDS and Bindery, FTP for downloading print files, EtherTalk printing, IPP												
PDL emulation	<table border="0"> <tr> <td>Standard:</td> <td>PCL6 emulation</td> </tr> <tr> <td>Option:</td> <td>PS3*8 emulation, XPS*9</td> </tr> </table>	Standard:	PCL6 emulation	Option:	PS3*8 emulation, XPS*9								
Standard:	PCL6 emulation												
Option:	PS3*8 emulation, XPS*9												
Available fonts	80 fonts for PCL, 136 fonts for PS3 emulation												
B/W Facsimile	(optional MX-FXX2 required)												
Compression method	MH/MR/MMR/JBIG												
Communication protocol	Super G3/G3												
Transmission time	Less than 3 seconds*10												
Modem speed	Modem speed 33,600 bps to 2400 bps with automatic fallback												
Transmission resolution	<table border="0"> <tr> <td>Standard:</td> <td>203.2 x 97.8 dpi</td> </tr> <tr> <td>Ultra Fine:</td> <td>406.4 x 391 dpi</td> </tr> </table>	Standard:	203.2 x 97.8 dpi	Ultra Fine:	406.4 x 391 dpi								
Standard:	203.2 x 97.8 dpi												
Ultra Fine:	406.4 x 391 dpi												
Recording width	A3-A5												
Memory	8 MB flash memory												
Grey scale levels	Equivalent to 256 levels												

SHARP
/This is Why

Sharp Electronics (UK) Ltd
4 Furzeground Way, Stockley Park,
Uxbridge, Middlesex, UB11 1EZ
Tel: 020 8734 2000 Fax: 020 8734 2400
Website: www.sharp.co.uk



*1 At rated voltage. May vary depending on machine conditions and operating environment. *2 1 GB = One billion bytes when referring to hard drive capacity. Actual capacity is less. *3 Best achieved time based on A4 copy, long edge feeding from 1st paper drawer, using document glass, when machine is ready. May vary depending on machine conditions and operating environment. *4 Measured using Sharp's standard chart (A4 with 6% coverage, B/W). The Quick File Folder shares the HDD with the Job Build function; up to 12 GB of data storage is available when using both functions. The storage capacity will be less for colour pages. *5 Optional MX-FXX2 required. *6 To view XPS files on PCs not running Windows Vista, you must have the XPS Viewer application installed. *7 Optional MX-EBX3 required. *8 Optional MX-PKX1 required for Mac OS and EtherTalk. *9 Optional MX-PUX1 and L80MXSMX3 (1 GB) required for XPS. *10 Based on Sharp's standard chart with approx. 700 characters (A4 long-edge feeding) at standard resolution in Super G3 mode, 33,600 bps, JBIG compression.

Design and specifications are subject to change without prior notice. All information was correct at time of print. The ENERGY STAR logo is a certification mark and may only be used to certify specific products that have been determined to meet the ENERGY STAR programme requirements. ENERGY STAR is a US registered mark. Windows, Windows NT, Windows XP and Windows Vista are registered trade marks of Microsoft Corporation. SAP and all SAP logos are trademarks or registered trademarks of SAP AG in Germany and in several other countries. Citrix is a trademark of Citrix Systems, Inc. and/or one or more of its subsidiaries, and may be registered in the United States Patent and Trademark Office and in other countries. All other company names, product names and logos are trademarks or registered trademarks of their respective owners. ©Sharp Corporation June 2011. Ref: MX-M502N/MX-M452N/MX-M362N/MX-M282N. All trademarks acknowledged. E&OE.